



AcceleratedVision

General programme functions

SHARPEN
HDR NEAT
DENOISE
FOCUS COLOR LUT
ZOOM BLACK & WHITE
EMOTION
ANALOG DIVE

Guide to the basic functions of all programmes

Basic interface

The variety of programmes offered by Accelerated Vision gives users an incredible choice and inspiration for image ideas, unique creative applications and targeted solutions to problems.

The interface, i.e. the programme interface with its control elements, is the same in all programmes and makes it easy to find your way around. Programme-specific modules such as the sharpness module in SHARPEN and, of course, presets that create the unmistakable image looks in the respective programmes are individual. The basic functions and orientation aids described here include:

- **Loading/importing an image file, exposure series or image sequence**
- **Overview of the work area****Speichern**
- **Save**
- **Print**
- **Crop**

Not only the basic functions are the same in all programmes, but also the quick way to the resulting image: **loading an image file, selecting a preset** to determine a desired image look or an option for a problem solution, **saving/printing a resulting image** or **cropping** it beforehand if required.

Note: In addition, and as a supplement to this guide, you will find numerous videos with explanations on selected topics or modules such as Installation, Selective drawing, Expert mode, replace sky and many more via **Extras/Video instructions**.

Notice: Clicking on the hyperlink in the table of contents leads to the corresponding topic, clicking on this heading leads back to the table of contents.

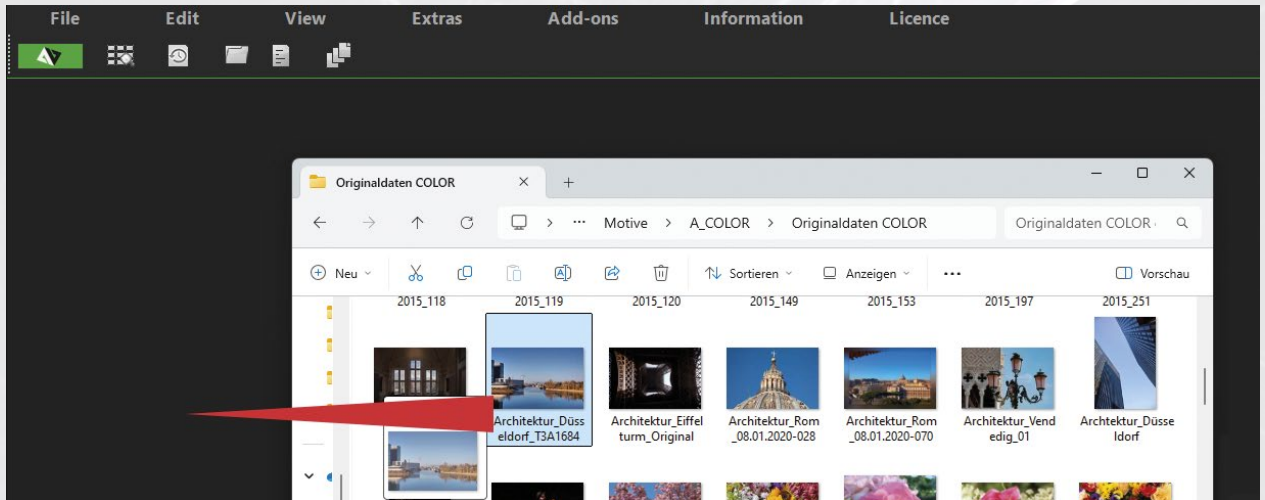
Inhaltsverzeichnis

1. [Loading an image file](#)
2. [Load exposure bracketing in HDR](#)
3. [Load image sequence in NEAT](#)
4. [Load stack in FOCUS](#)
5. [The workspace](#)
6. [Menu bar with sample applications](#)
7. [Toolbar](#)
8. [Toolbar in Finalise and Expert mode](#)
9. [Selecting a preset](#)
10. [Saving a result image](#)
11. [Customised image cropping - cropping options](#)
12. [Scaling and saving](#)
13. [Printing the result image](#)

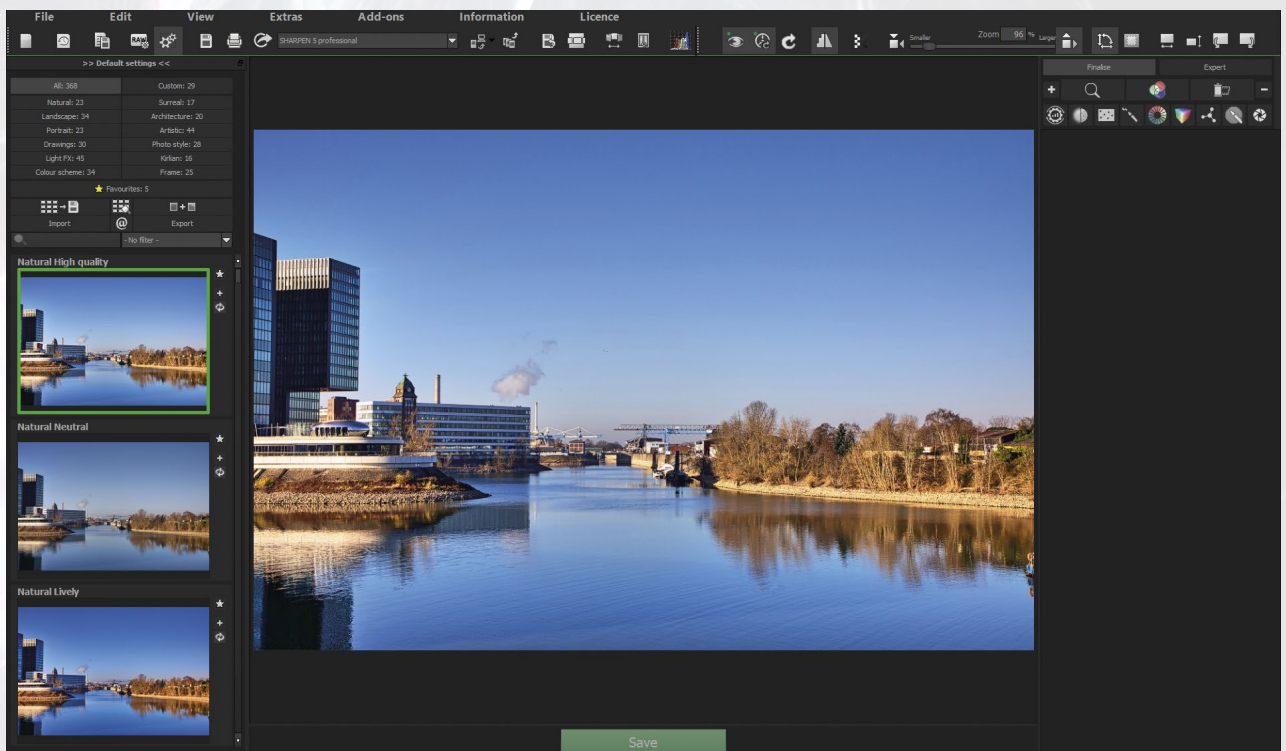
1. Loading an image file

There are various ways to load a single image, all of which are equally important. You decide which method is quickest or easiest for you. The two most common are:

Drag & Drop

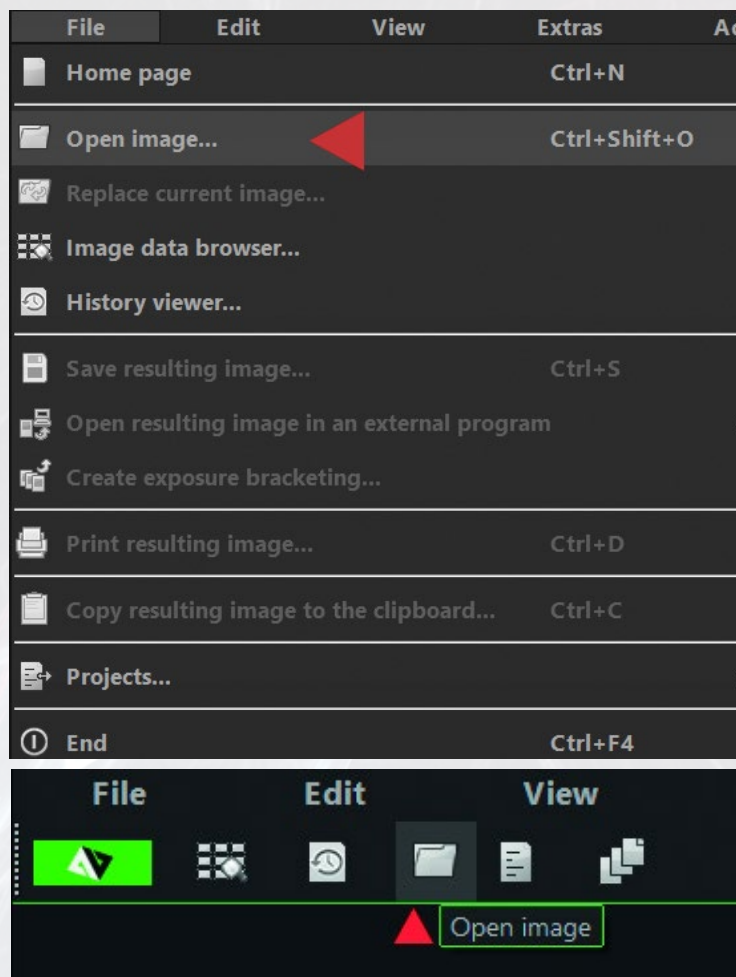


Simply drag and drop the image files onto the programme window. To do this, select the desired image in any folder or in a folder you have created and drag it into the programme window by holding down the left mouse button.

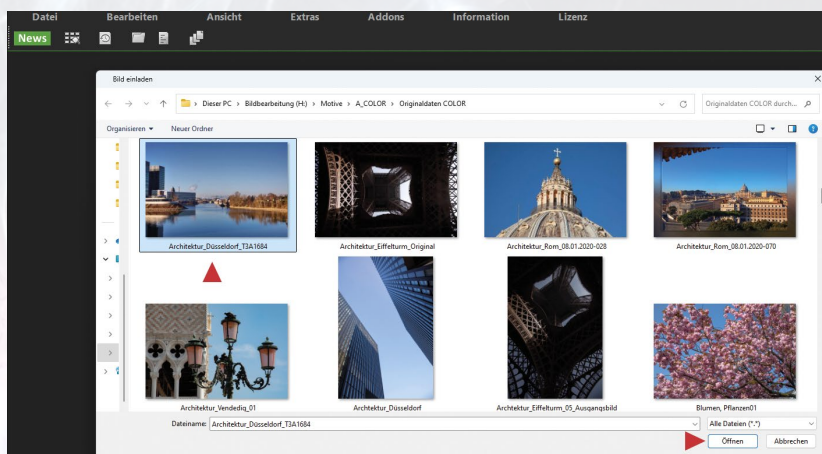


Seconds later, the result image is displayed with the current default settings.

Load file/image



Alternatively, select the desired image in the **File/Open image** menu or by clicking on the **Open image** button.



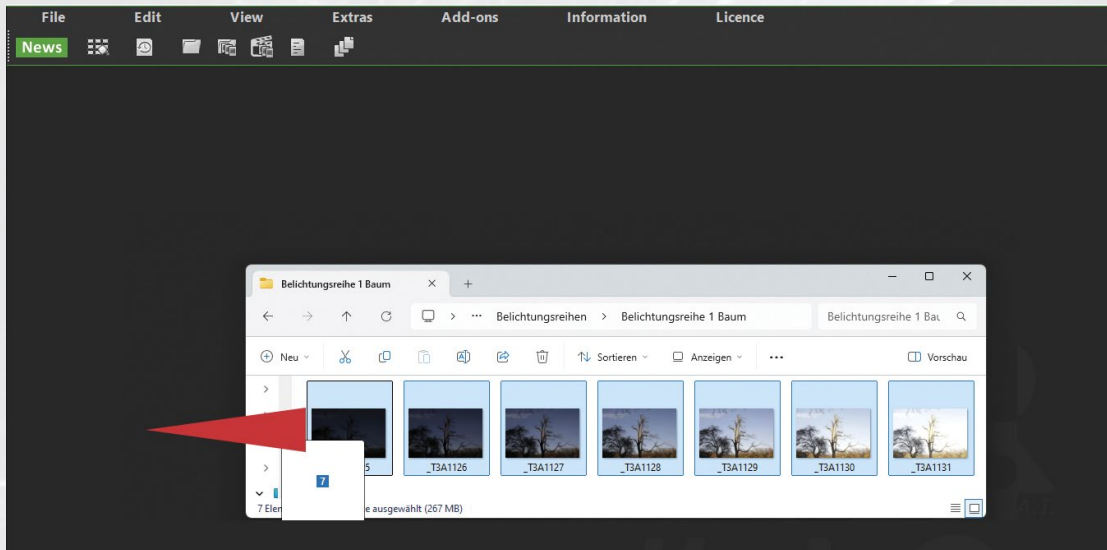
Double-click on the selected image file or click on Open to return the image to the programme interface.

If you have selected the menu Extras → Settings → **Program** a folder for the **individual images**, this folder is always selected automatically.

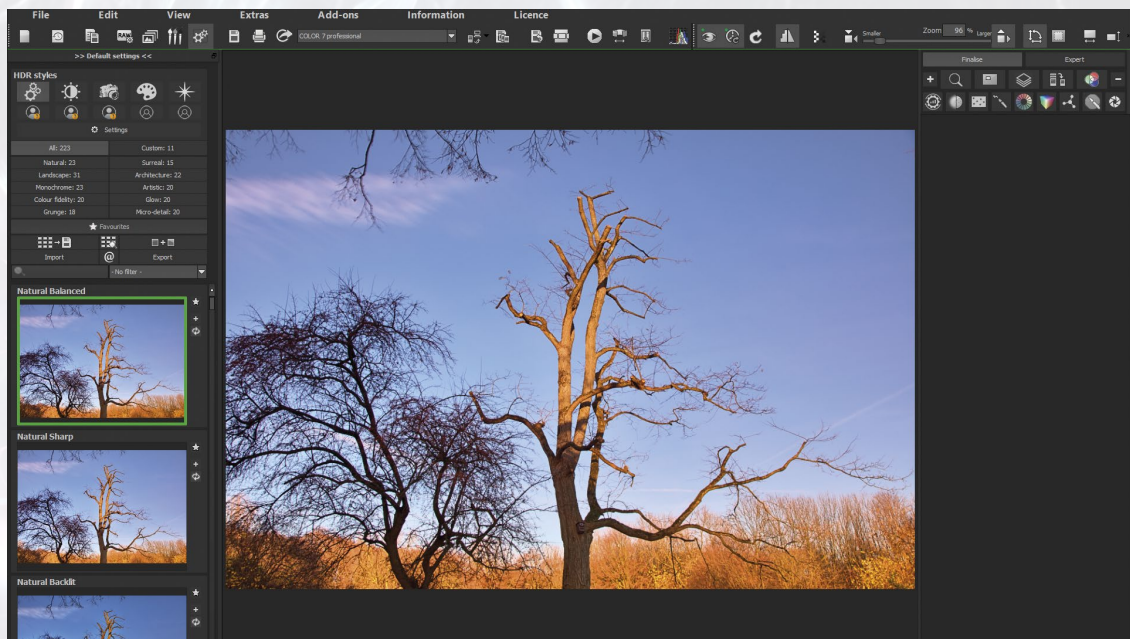
Special cases: In addition to the 'normal' loading of a single image file, there are programme-specific features such as exposure series in the **HDR programme** or **image sequences** in **NEAT** and **FOCUS**. However, the procedure is very similar in both cases:

2. Open exposure bracketing in HDR

Drag & Drop:

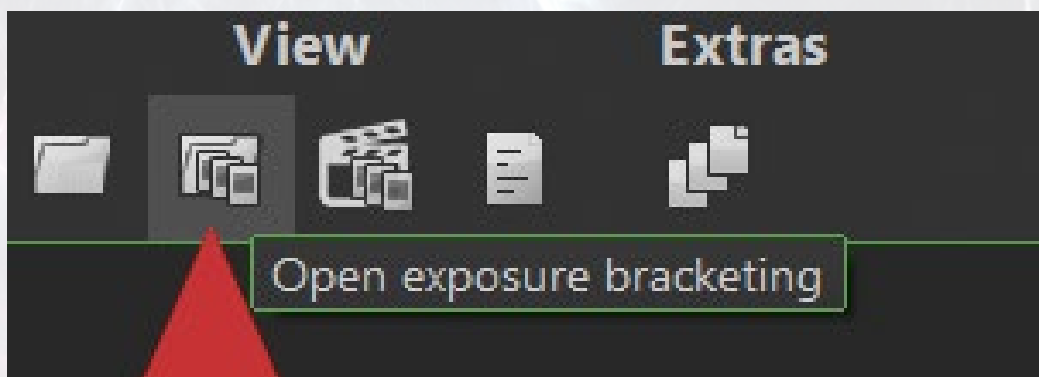
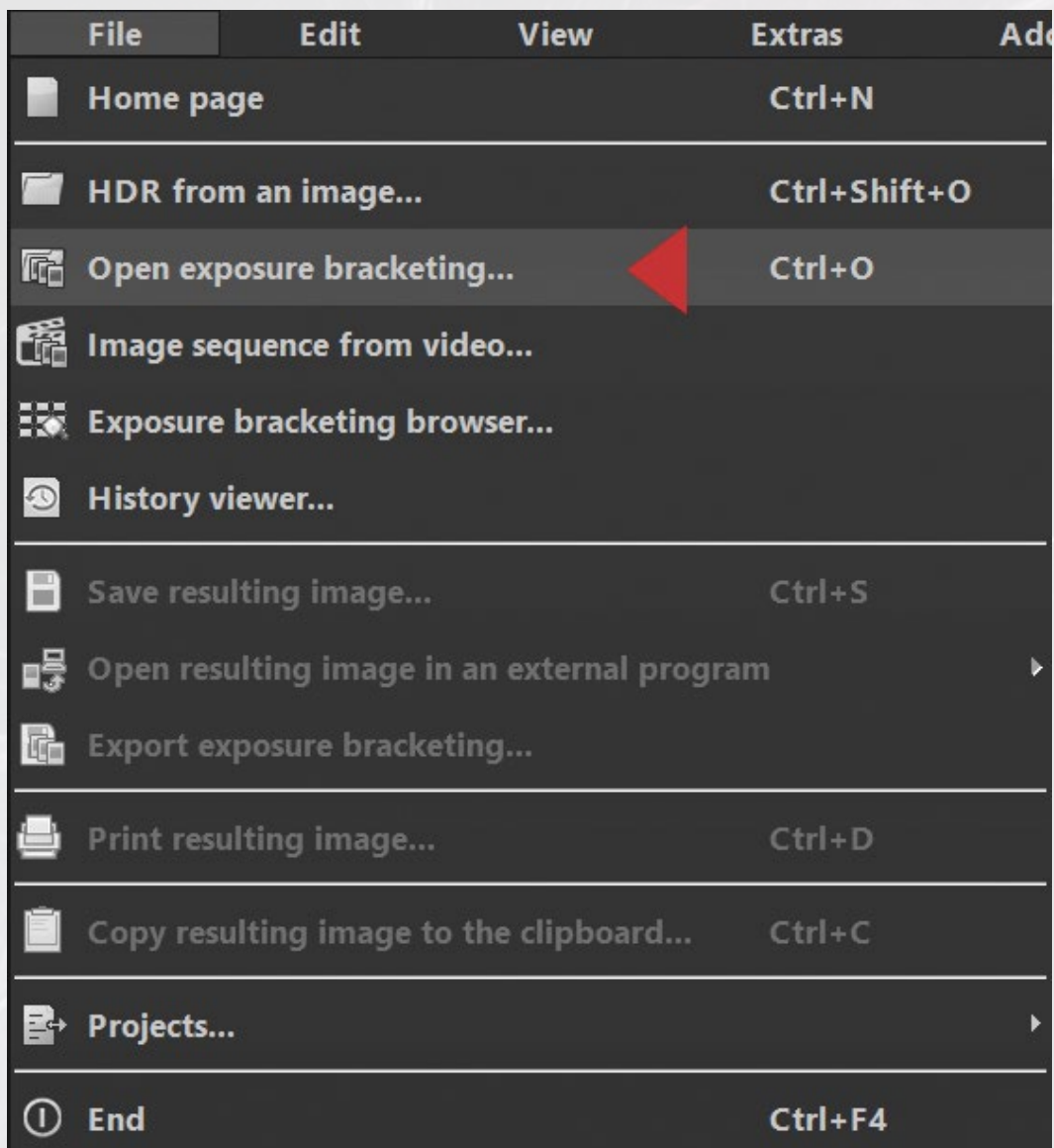


Select all images of a selected exposure series and drag & drop them into the programme window like a single image by holding down the left mouse button.



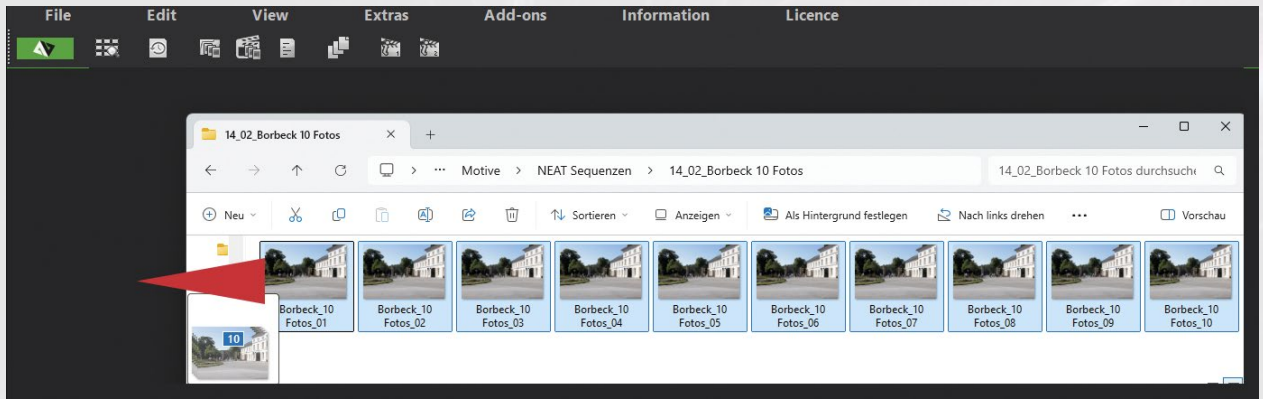
Seconds later, the result image is displayed with the current default settings.

Open exposure bracketing via the menu or the button

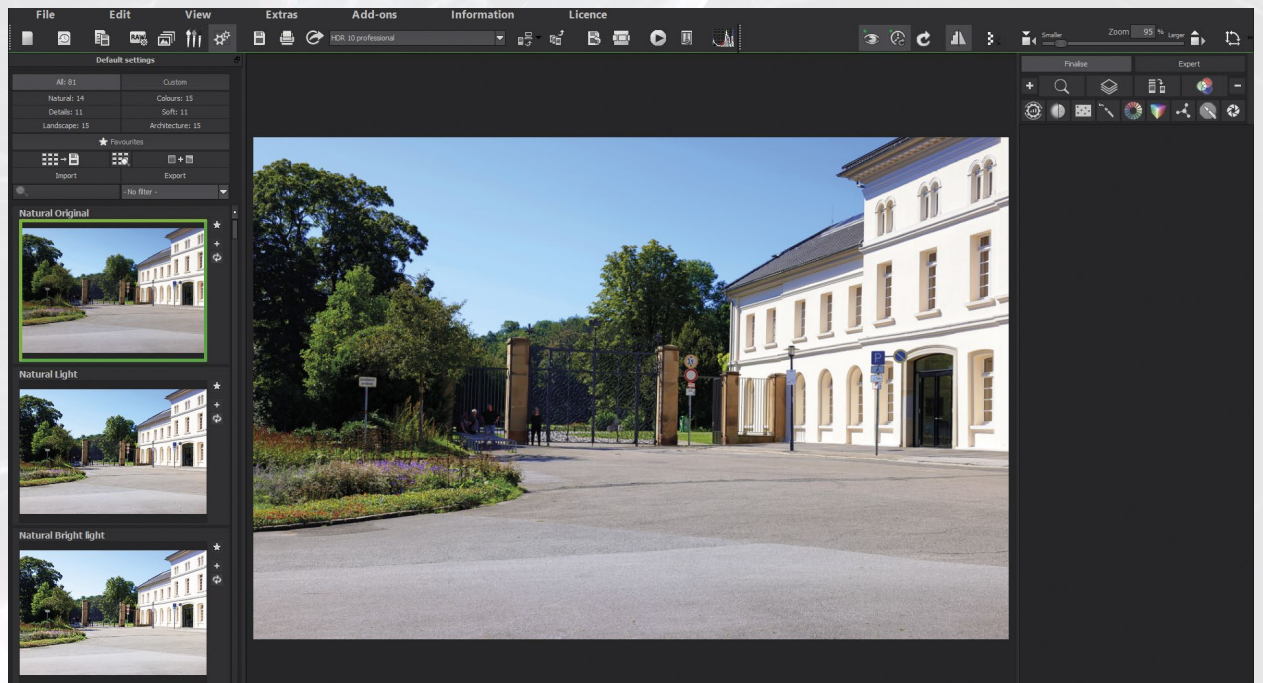


Alternatively, select the file menu → **Open exposure bracketing** or on the start screen the button **Open exposure bracketing**, select the desired folder, mark the exposure series and load the exposure series into the program window by clicking on Open. If you have selected the menu Extras → Settings → **Program** a folder for the exposure series, this folder is always selected automatically.

3. Load image sequence in NEAT



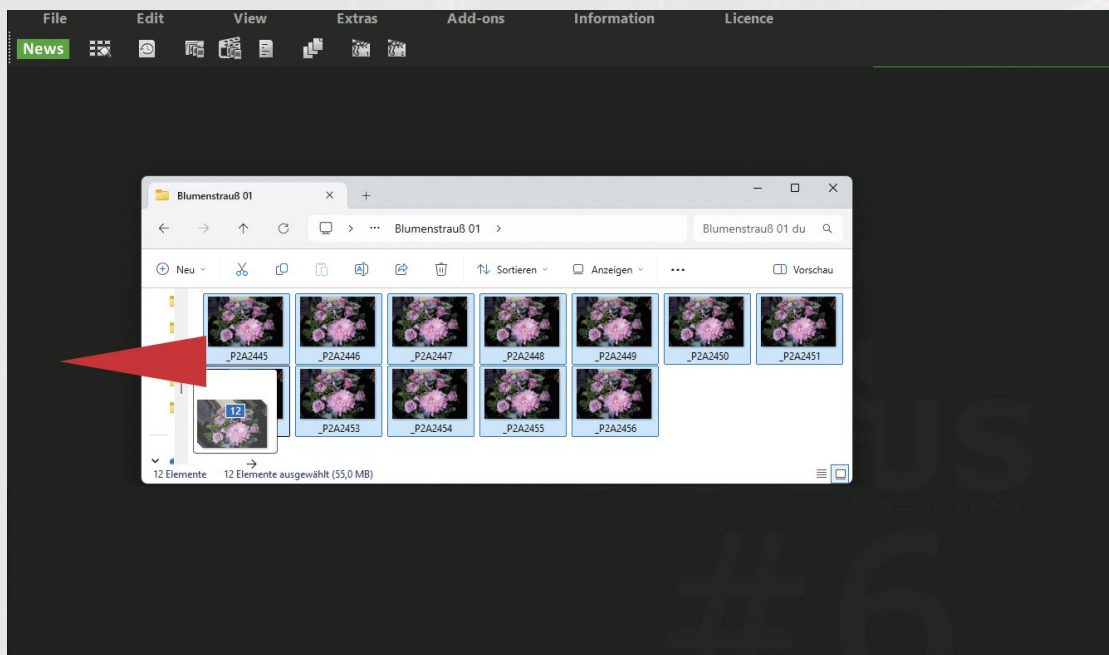
Select all images of a selected image sequence and drag & drop them into the program window like a single image by holding down the left mouse button.



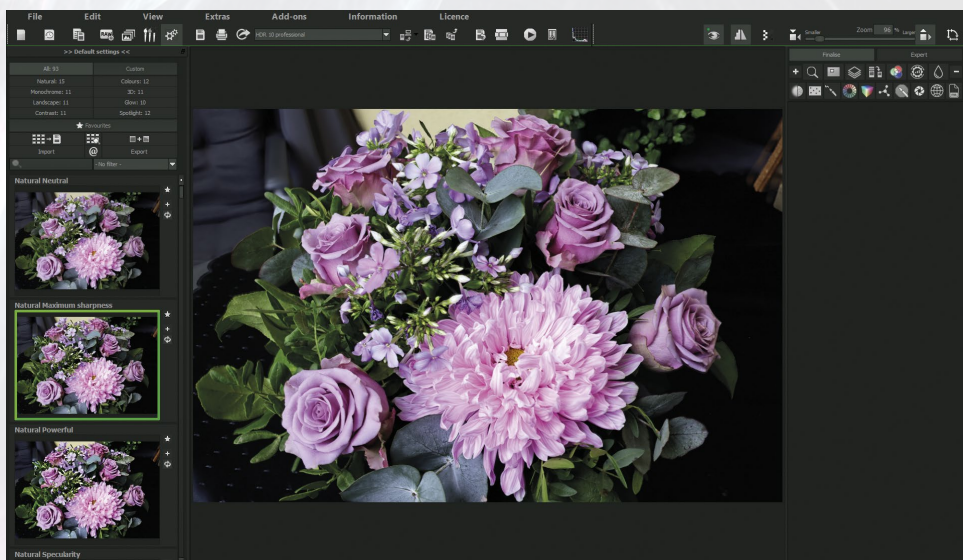
Seconds later, the result image is displayed with the current default settings.

Alternatively, select File menu → **Load image sequence** or on the start screen the button **Load image sequence**, select the desired folder, mark the images in the image sequence and load the image sequence into the program window by clicking on Open. If you have selected the menu Extras → Settings → **Program** a folder for **photo series**, this folder is always selected automatically.

4. Load stack in FOCUS



Select all images of a selected image sequence and drag & drop them into the program window like a single image by holding down the left mouse button.



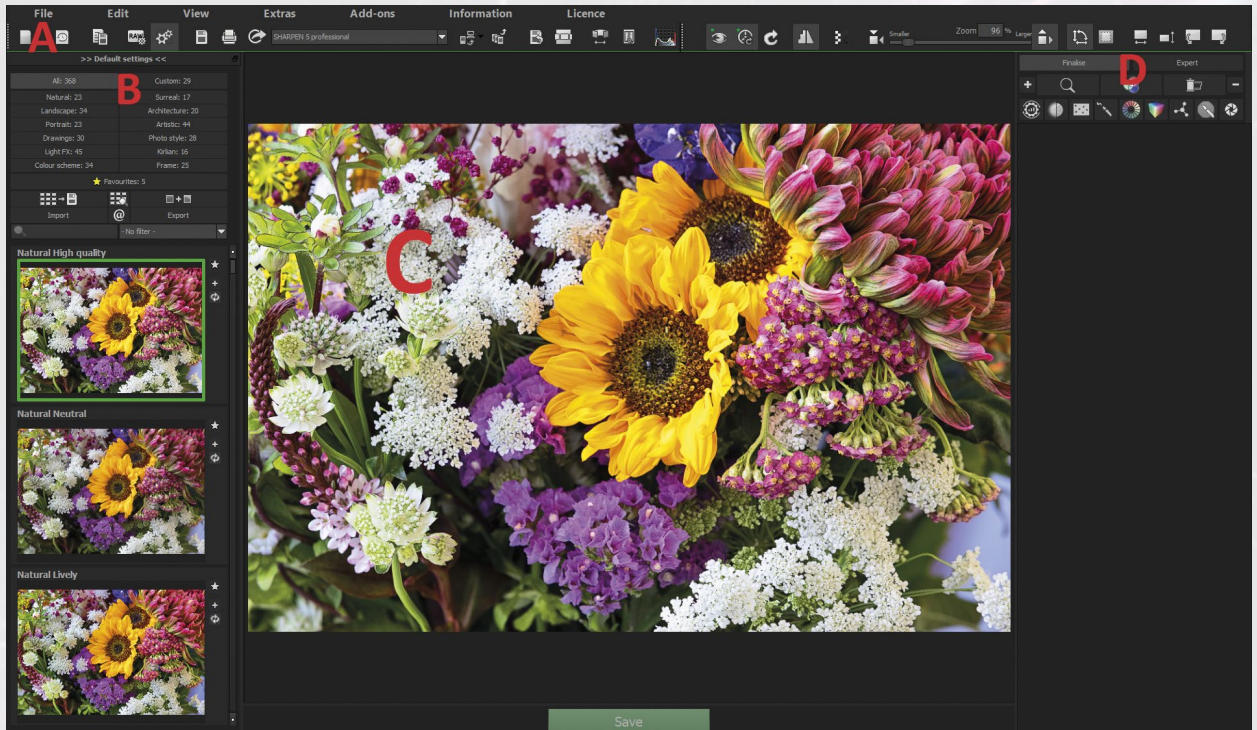
Seconds later - depending on the file size of the image sequence - the resulting image is displayed with the current default settings.

Alternatively, select File menu → **Load image sequence** or on the start screen the button **Load image sequence**, select the desired folder, mark the images in the image sequence and load the image sequence into the program window by clicking on Open.

If you have selected the menu Extras → Settings → **Program** a folder for **photo series**, this folder is always selected automatically.

5. The workspace

If you have loaded an image file, exposure series or image sequence into the program, the previously grey work area “comes to life”.



A: Menu and toolbars (top)

B: Presets and other presets such as HDR styles in the HDR program (left)

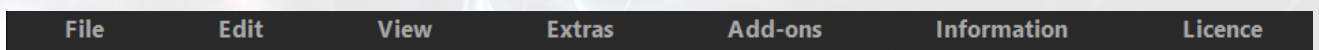
C: Image area with the green Save button (center)

D: Finalisieren-Modus und Wechsel zum Experten-Modus (rechts)

Menu and toolbar

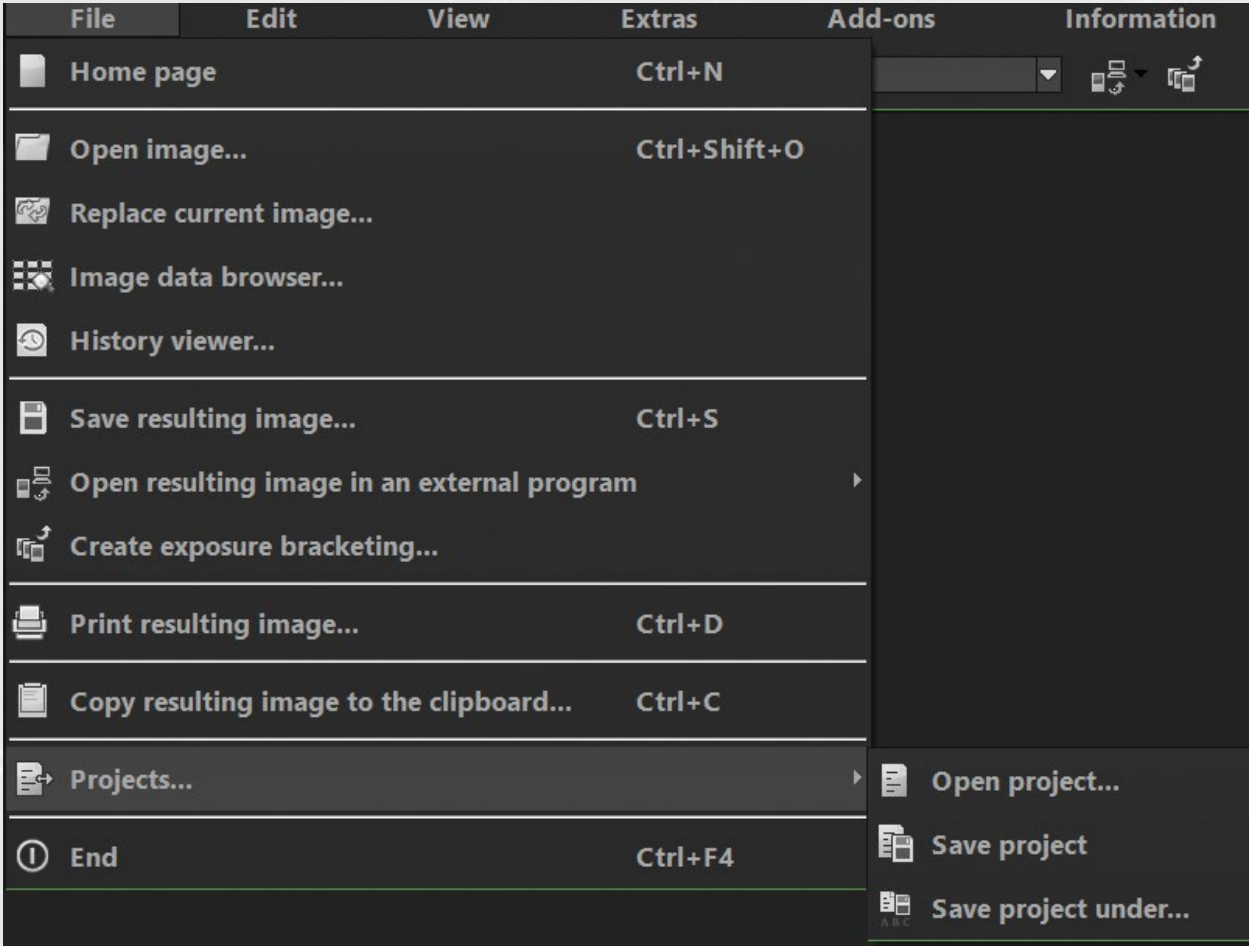
At the top of the screen is the menu and toolbar.

6. Menu bar with sample applications:



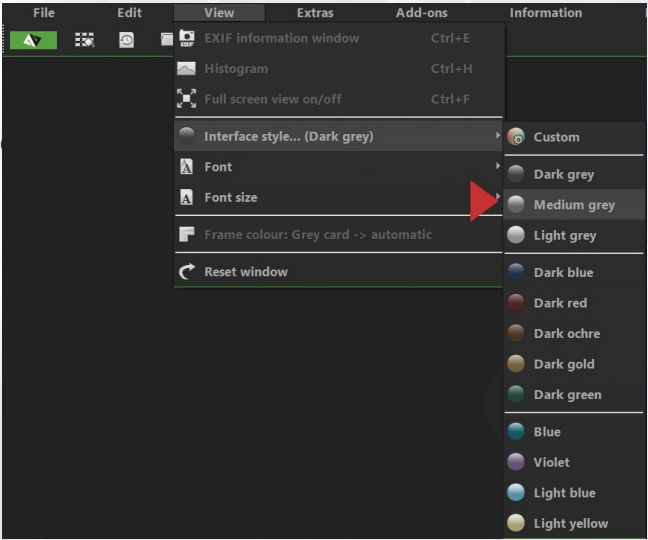
After clicking on them, the menus display all the options that you can use for files, projects, switching to other modules, settings for the interface, individual settings and information about the program.

Example 1: File menu



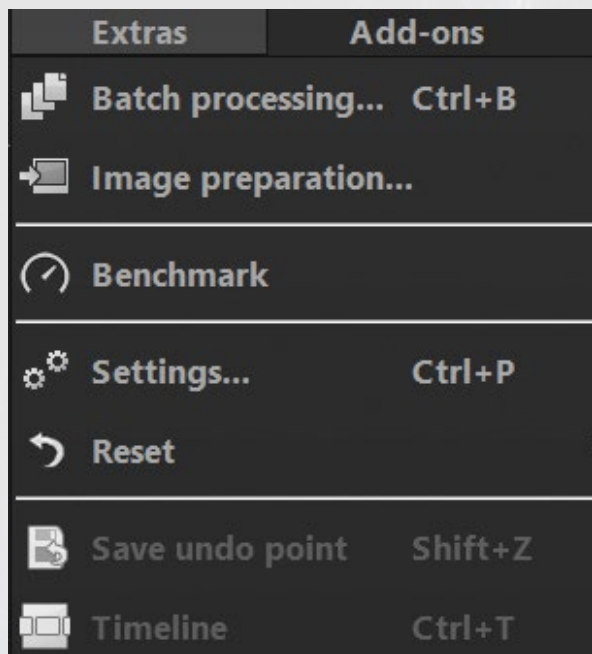
In this menu, you can load individual images, exposure series or image sequences, save and/or print the resulting images, return to the start screen or save and open projects. Projects save all individual changes that you have made to presets or modules, for example.

Example 2: View-Menü



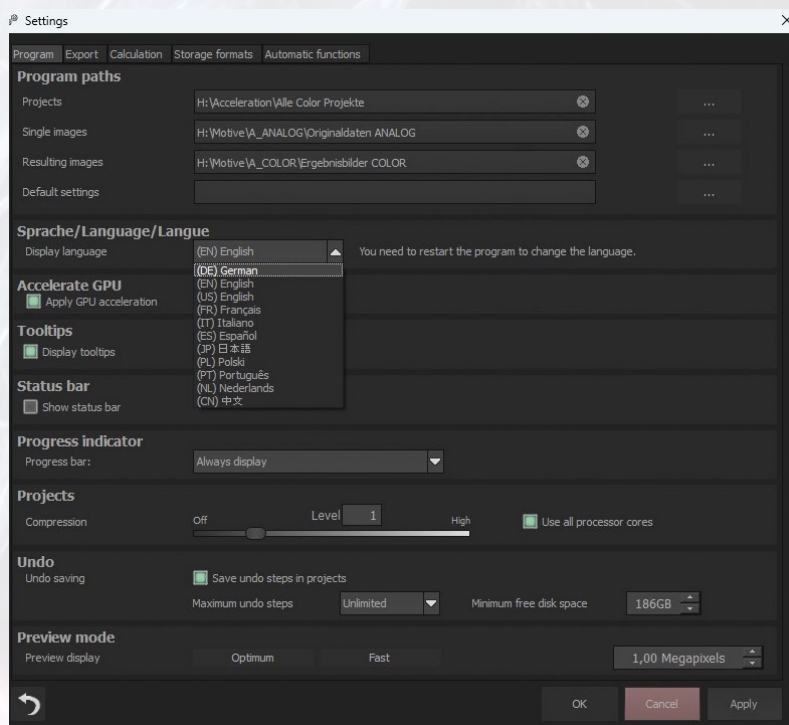
In this menu you can, for example, change the default dark grey interface color to medium grey or another select a font or font size as desired. If you wish, you can display windows such as the EXIF information window or the histogram.

Example 3: Extras-Menü



In this menu, you can call up the window for batch processing if required. In image preparation, you can set an individual white balance, define correction images (dark and flat frames) or apply a created RAW profile to any number of images or use it for batch processing.

Undo points create save points, e.g. before switching to the RAW module or for different composing variants in the timeline, which can be accessed at any time if required.



In the **Settings/Program** submenu item, you can define the target folders for projects, exposure series, image sequences, individual images and result images depending on the program used. Then, for example, when loading and saving an image file, this folder is always called up directly, which significantly speeds up the workflow.

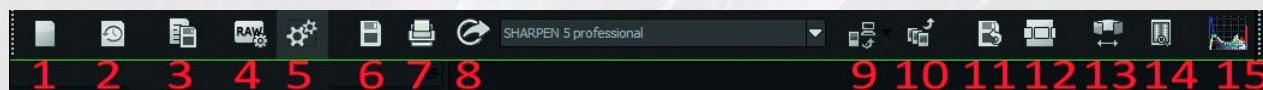
You can choose between 8 different languages for each program. All fonts and interactive buttons are switched to the selected language after closing and reopening the program.

7. Toolbar

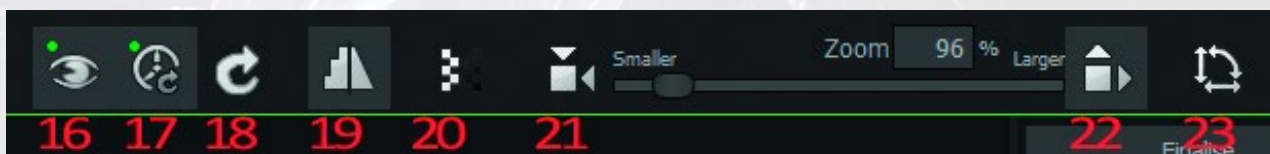
When you start the program, the range of tools is limited.



Here you can use the buttons to call up the image data browser (1) or history browser (2), load single images (3), exposure series (HDR) or image sequences (FOCUS, NEAT), open projects (4) or call up batch processing (5)



If an image file is loaded, the toolbar below the menu bar “comes to life”. The left part of the toolbar (top) refers to the **control functions** of the program, the right part (bottom) to the **control of the image view**.



Control functions of the program

Home Page (1), History Viewer (2), Save project (3), RAW-Development (4), Post processing (5), Save resulting image (6), Print resulting image (7), Transfer to other products of the product family (8), Resulting image in an external program (9), Create exposure bracketing (10), save Undo Point (11), Timeline (12), Panorama-View (13), Comparison View (14), Histogramm (15).

Control of the image view

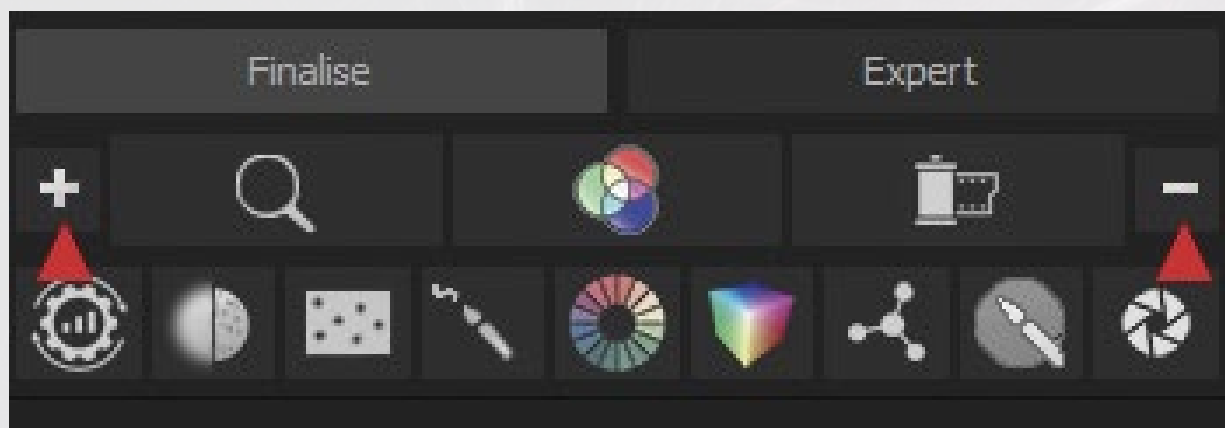
Preview mode on/off (16): The preview mode reduces the file size and speeds up all calculations, the resulting image is always calculated in the original file size.

Real-time calculation mode on/off (17): Temporarily switching this off is useful if you make several changes, which are then recalculated together by clicking on the button (18).

Start recalculating the image (18), Activate/deactivate high-quality display (19): This high-quality display is only effective for views above 100%.

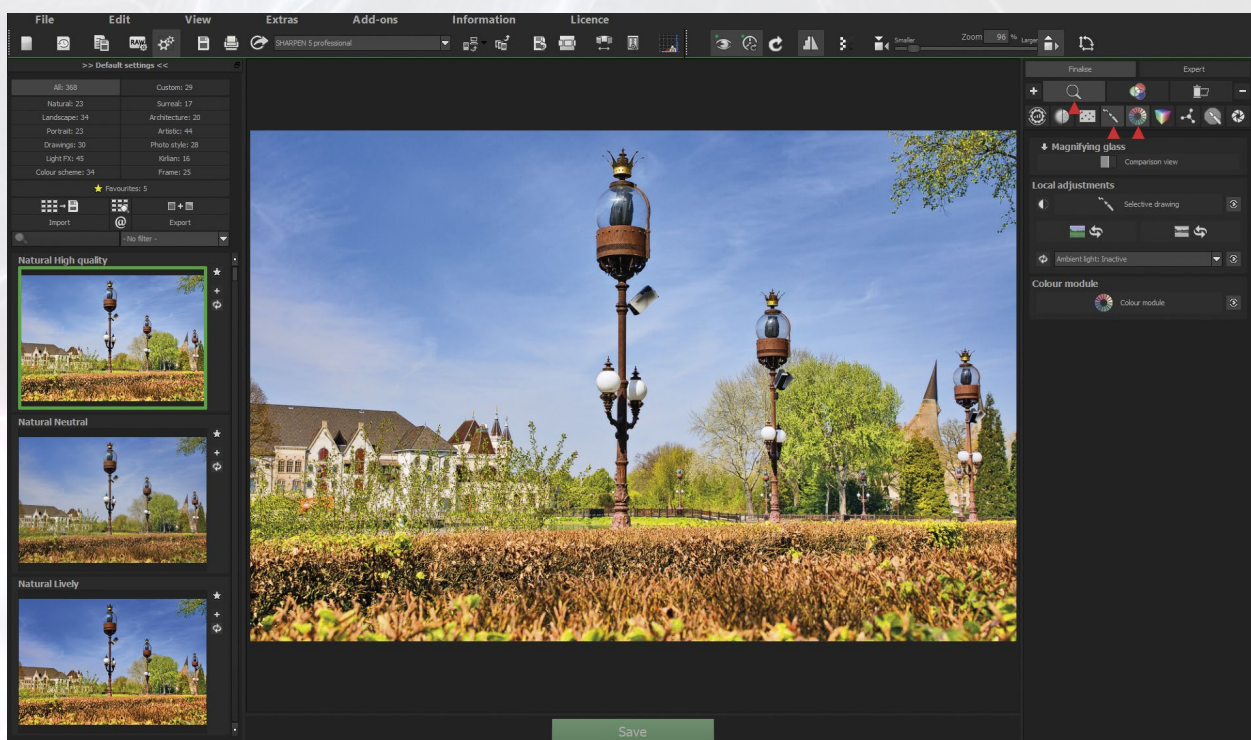
Show border pixels on/off (20), Set zoom factor to original resolution (21), Set zoom factor to program window size (22), Show/hide additional functions (23).

8. The toolbar in Finalise and Expert mode



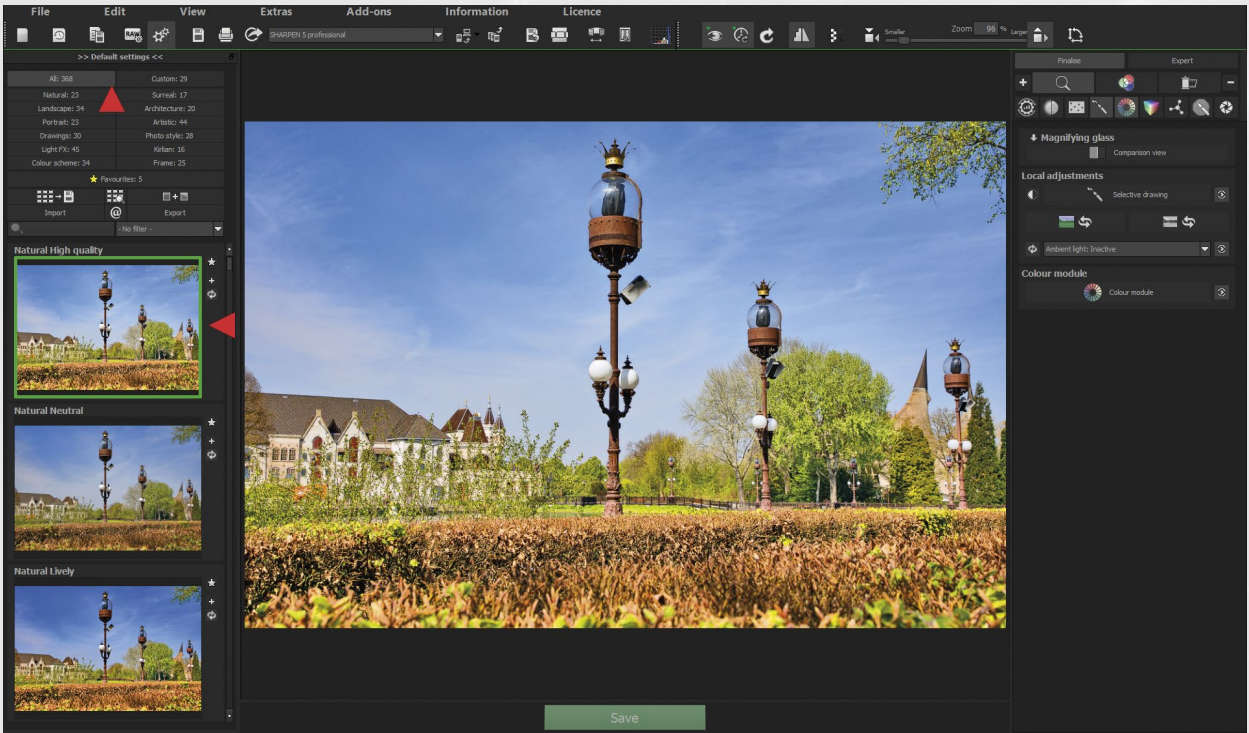
The toolbar allows you to individually configure the modules that are most suitable for your particular workflow. This provides a better overview of the required modules and tasks. The currently selected configuration is retained even after closing the program and opening it later.

Clicking on the **minus sign** hides all modules and only displays the symbols (see graphic above), clicking on **the plus sign** shows all modules.



The contents are displayed when you move the mouse over the individual buttons. Clicking on a button shows the corresponding module, in the example the **Magnifying glass** with the large comparison view, **Colour module** and **Selective drawing** modules. Another click on a button hides the corresponding module again.

9. Selecting a preset



All: 368	Custom: 29
Natural: 23	Surreal: 17
Landscape: 34	Architecture: 20
Portrait: 23	Artistic: 44
Drawings: 30	Photo style: 28
Light FX: 45	Kirlian: 16
Colour scheme: 34	Frame: 25
★ Favourites: 5	
Import	Export
- No filter -	

All: 367	Custom
AI Denoise: 73	AI Optimise: 72
Denoise: 73	Optimise: 72
APS-C: 7	Full format: 14
Mobile: 16	Web: 15
Night shot: 8	Astro: 17
★ Favourites	
Import	Export
- No filter -	

After loading an image file, an exposure series or an image sequence, you will see the **preset categories** (1) and **presets** (2) on the left-hand side. These presets essentially determine the desired image look, the intended image mood or the preview of a selected option such as denoising in the DENOISE programme.

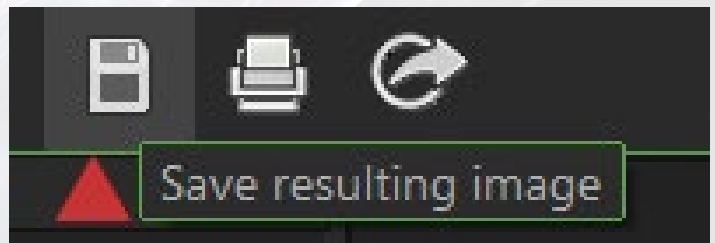
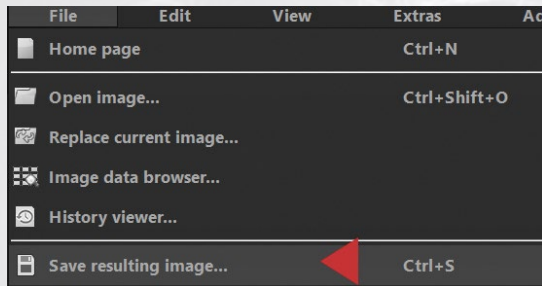
Click on a category to select it and the corresponding presets are displayed below. Clicking on a preset changes the displayed image look and can be compared with the original by right-clicking on the image.

The categories offered are matched to the respective programme, in the example **COLOR** (left) and **DENOISE** (right).

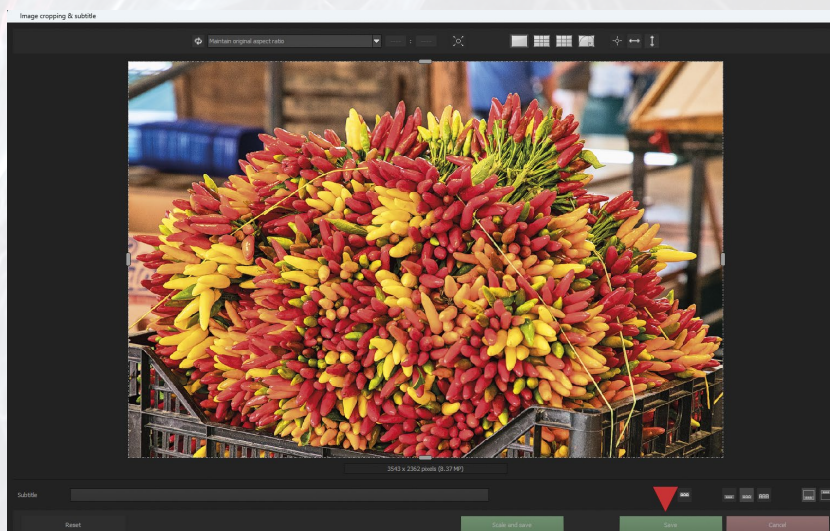
10. Saving a resulting image

Once you have found the desired image look or have sharpened or denoised an image file to your liking or merged exposure series/image sequences in such a way that you are satisfied with the result, save the resulting image. You **can do this by clicking on File/Save resulting image or by clicking on the big green button** in most programmes.

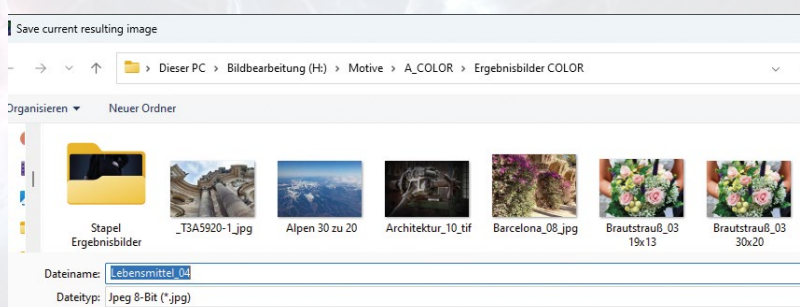
Option 1: File/Save resulting image



Click on **Save resulting image** in the file menu (left) or on the **Save resulting image button** (right)...

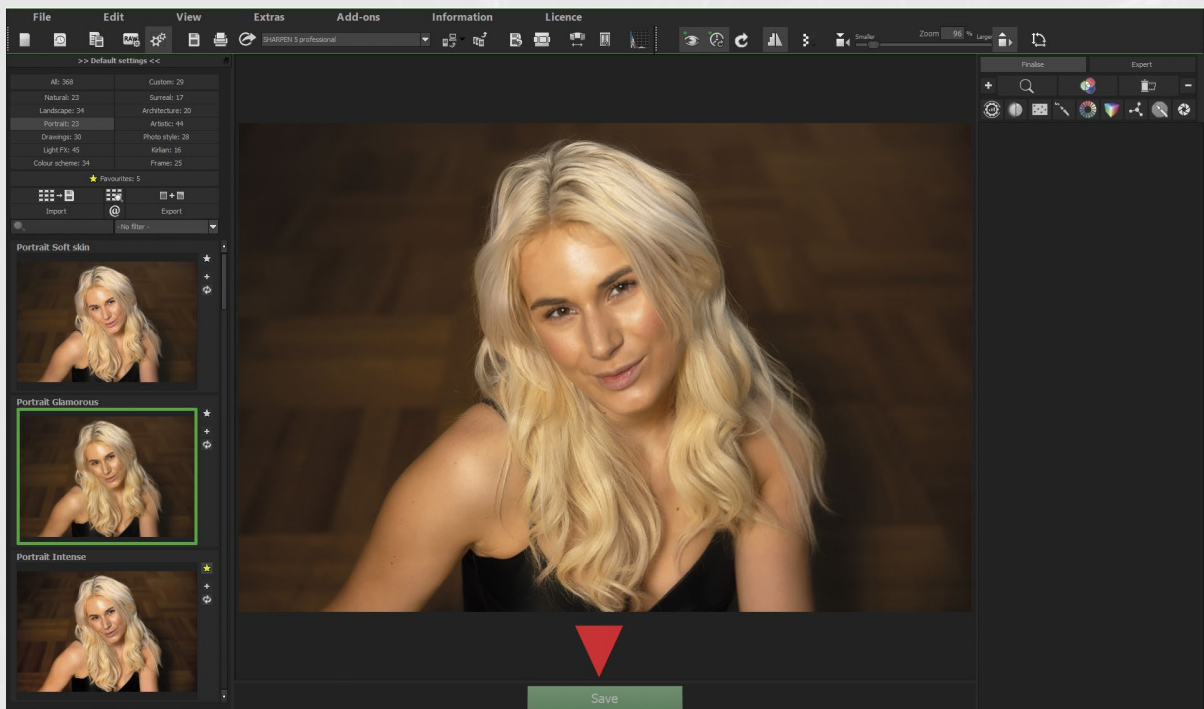


... the Image cropping & subtitles window opens. If you do not want to crop the image or insert a subtitle, click on the green **Save** button...



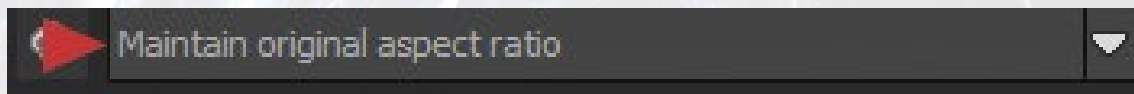
... and save the resulting image in the desired folder. If you have defined a target folder under Extras/Settings/Program, this folder will be selected specifically.

Option 2: Click on the green „Save“ button

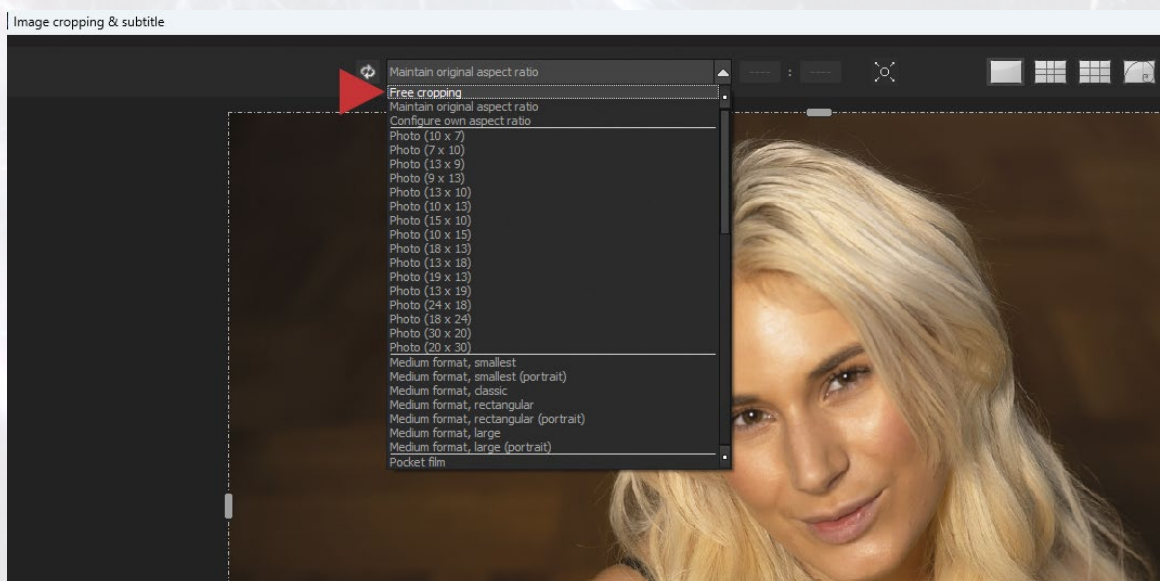


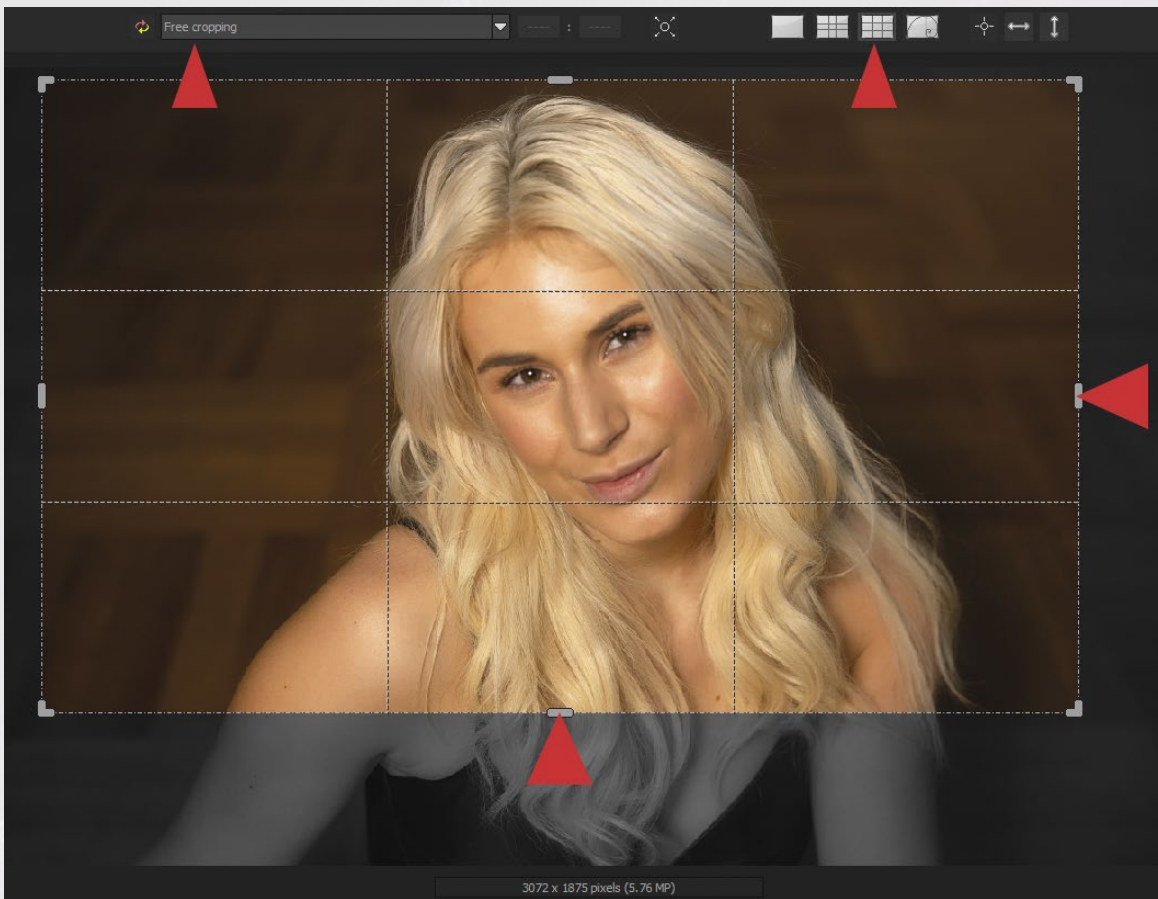
This is the easiest way in all programmes with the green button: Clicking on the button opens the **Image cropping & subtitle window** again, and the next steps are identical to those described in option 1.

11. Customised image cropping – cropping options

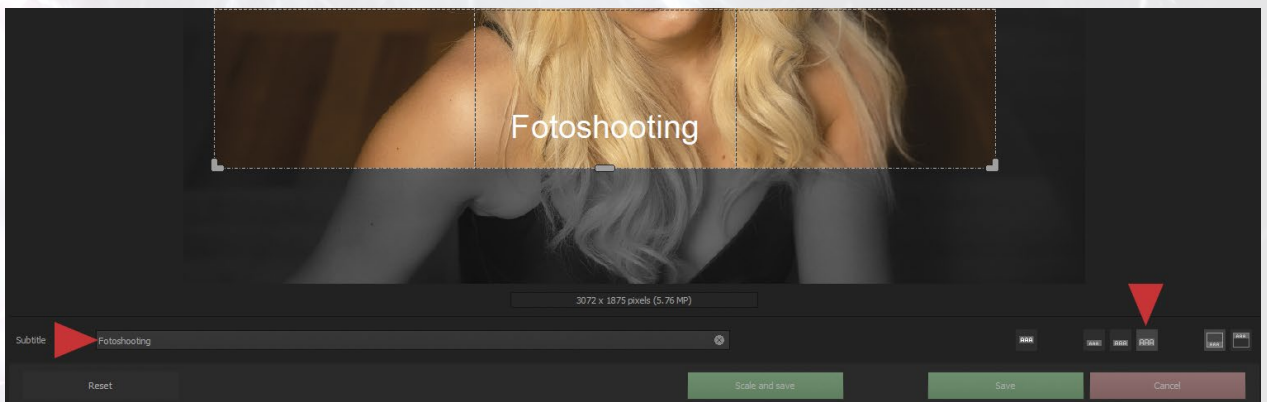


In the **Image cropping & subtitle window**, numerous fixed aspect ratios or a free image cropping are offered for an individual image cropping after clicking on the Maintain original aspect ratio button.



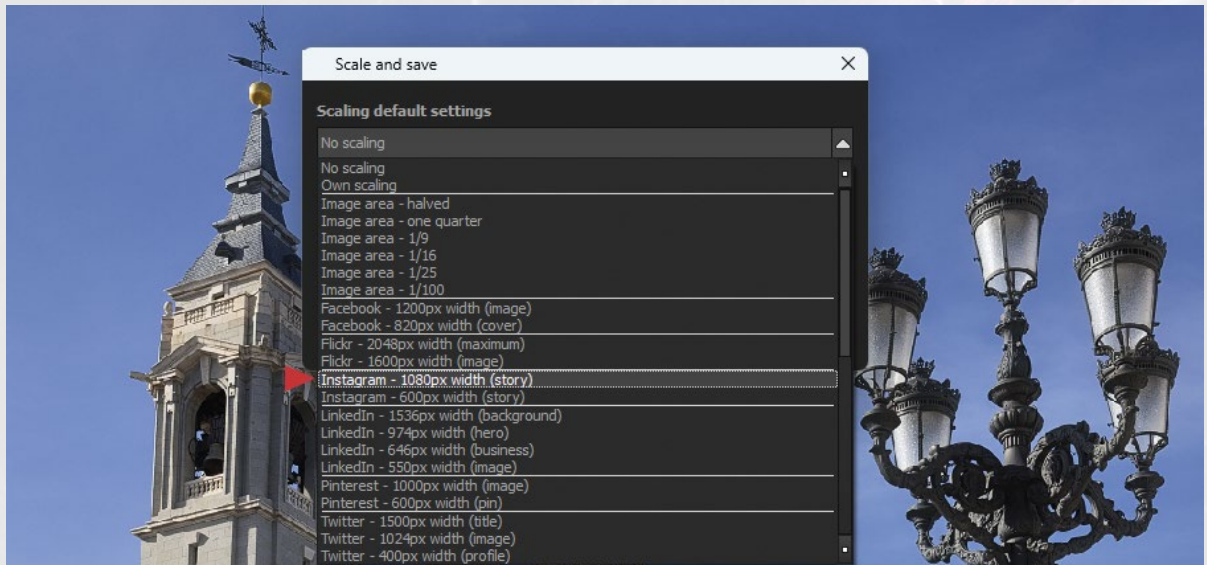
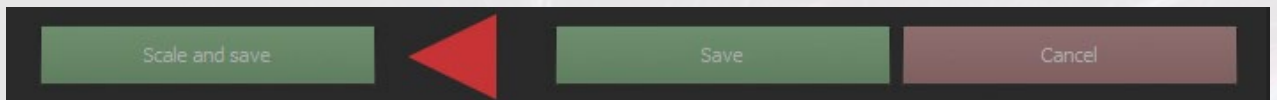


For example, if you select Free image cropping, determine the desired image section by dragging one or more of the eight handles; the 'cropped' areas remain displayed semi-transparently. Click in the cropping window to move the selected image section as required. Auxiliary lines can be displayed in the top right-hand corner, in the image example the rule of thirds. If a fixed aspect ratio is selected, the new image section always corresponds to the selected ratio, whereby the specifications are not in cm, but only indicate the aspect ratio such as "30 x 20".

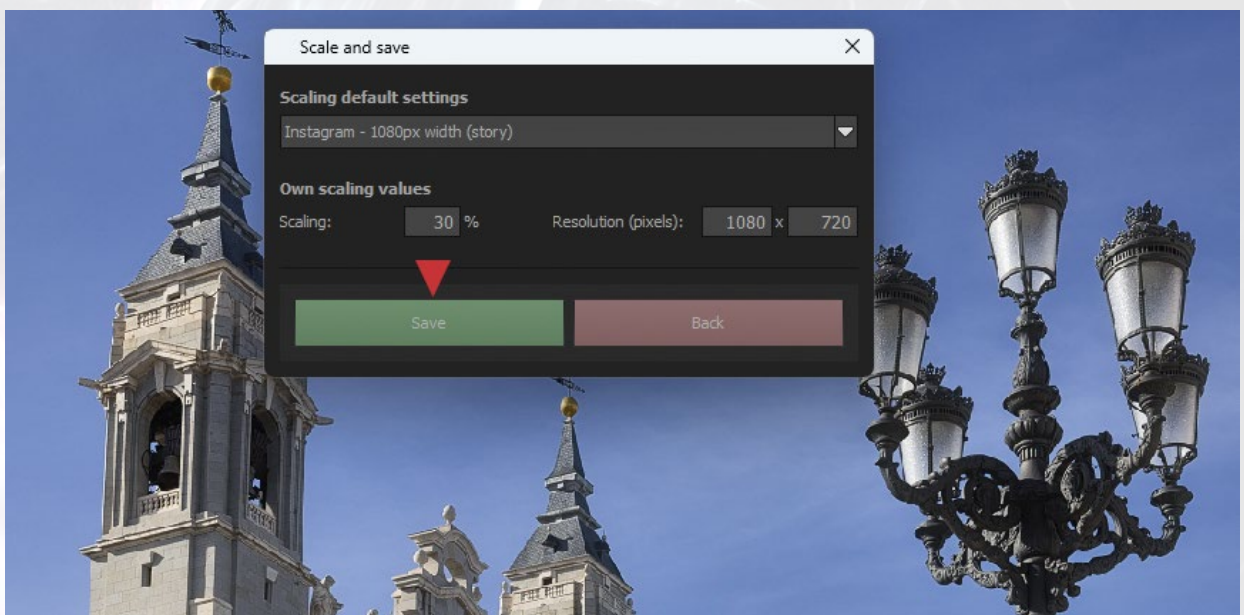


If required, enter a subtitle in the bottom left-hand area, which can be varied in font size or position (bottom or top) in the bottom right-hand area. Click on **Save** to save the modified result image.

12. Scaling and saving



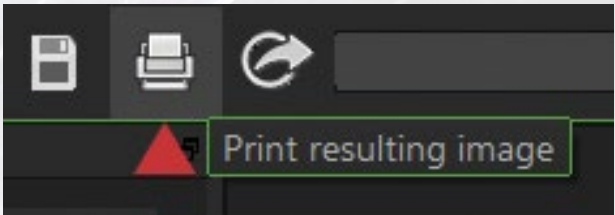
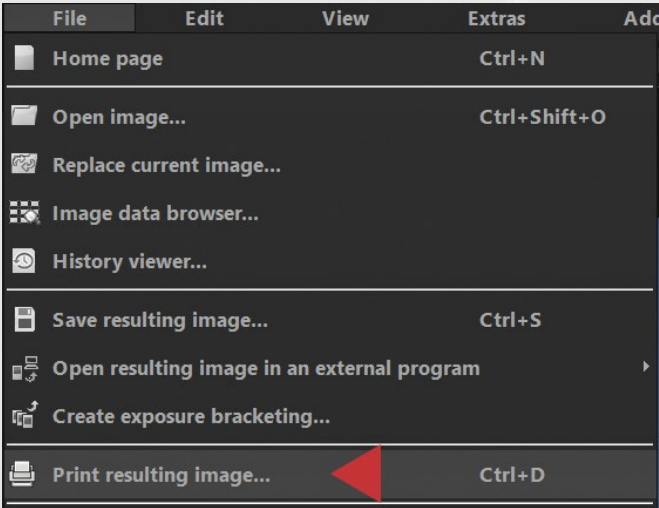
opens the **Scale and save** window. Here you can enter your own scaling up to 100% of the original size or choose a selection from the offer, e.g. Instagram - 1080 px width (story).



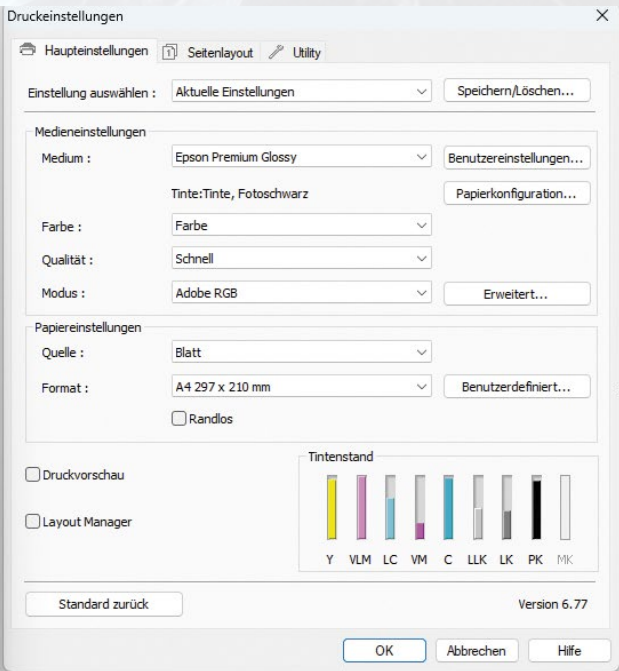
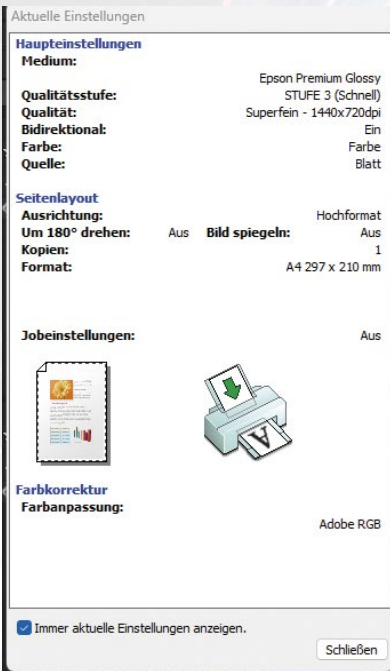
Click on the desired scaling to display the corresponding values. In the Instagram example, this means a value of 30% for the scaling and 1080 x 720 for the resolution (pixels). Click on **Save** to save the selected scaling.

13. Print resulting image

Each result image can be printed out.



In the file menu, click on **Print resulting image** (left) or on the button of the same name (right), ...



☒ Die App darf meine Druckeinstellungen ändern

Drucken

Abbrechen

the printer dialogue opens. Here you specify the printer, change the print options if necessary, confirm everything with **OK** and start the printing process by clicking on **Print (Drucken)**.